

City of Hope National Medical Center



The top portion of the slide features a photograph of the City of Hope building at dusk or night. The building is a modern, multi-story structure with a prominent glass facade that is illuminated from within, creating a warm glow. The sky is a deep blue, and the overall scene is set against a dark background. The title text is overlaid on this image.

The City of Hope Story

City of Hope was founded in 1913.

City of Hope focuses on the treatment, prevention and cure of cancer, HIV/AIDS, and diabetes.

City of Hope researchers work to speed new findings from the lab to clinical trials. “Bench-to-Bedside”

City of Hope scientists and researchers have given rise to synthetic insulin and cancer-fighting drugs such as Herceptin – treatments used by millions of patients worldwide, and pioneered the technology of bone marrow transplantation.

We are one of only 40 National Cancer Institute-designated Comprehensive Cancer Centers in the U.S.



Comprehensive Cancer Center - National Cancer Institute

1. Basic and Translational Science
2. Cancer Research
3. Patient Care / Clinical Operations
4. Development / Fund-Raising



1. Basic and Translational Science Beckman Research Institute (BRI)

- Basic Scientific Research, such as;
 - Genomics
 - Proteomics
 - High Content Screening
- Over 300 active Federal Grants
- Personalized Medicine
- Core Services support Principal Investigators



1. Basic and Translational Science IT Implications

- “Super Computing” Needs
- Massive Storage Requirements
 - Massive Backup and Archiving
- Network Bandwidth
- Flexible & Dynamic Architecture
- Grants Management / Time & Effort Systems

2. Cancer Research

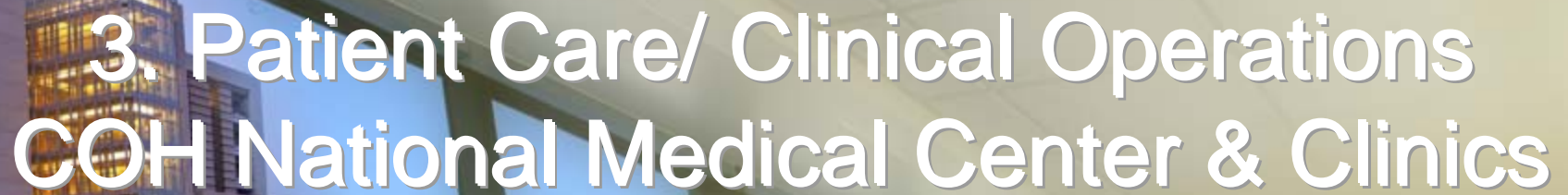
- Clinical Protocol Development
- Bench-to-Bedside Therapies
- Population Sciences Department
- Over 450 Open and Follow-up Clinical Trials
- Significant Data Analytics
 - Division of Information Sciences





2. Cancer Research IT Implications

- Comprehensive Data Warehousing
- Large number of Ph.D.'s conducting analytics
 - Population Research
 - Basic Science Studies
 - Cancer Investigations
 - Clinical Analytics
- Overhaul of Clinical Trials Management System



3. Patient Care/ Clinical Operations COH National Medical Center & Clinics

- Leader in Bone Marrow Transplants
- 800 to 1,000 Outpatient visits daily (facility built for half that many)
- Significant Recurring patient population
- Top 5 percent Inpatient satisfaction
- Biggest opportunity for improvement –
Outpatient satisfaction

3. Patient Care / Clinical Operations IT Implications

- Commitment to a comprehensive Clinical Information System – Eclipsys

Phase I August 1, 2009	Registration Scheduling Patient Accounting Electronic Medical Record (SAC)
Phase II TBD	Pharmacy Clinical Documentation CPOE

- General Accounting System (ERP) assessment and replacement

4. Development / Fund-Raising

- Over 140 FTEs in Development and External Affairs
- Over \$100 Million in annual philanthropy

National Media partnerships include:



The world's first radio station dedicated to the cure of women's cancers

Sports Partnerships

ThinkCure!
the official charity of the Los Angeles Dodgers



Music & Entertainment Industry Support

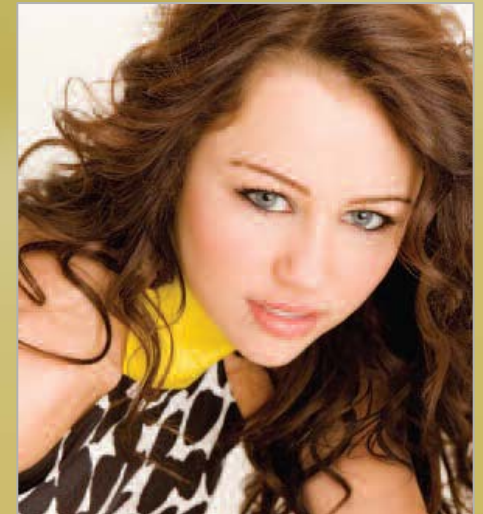
American Idol Live

- \$1 from every ticket -- 2009 “American Idol Live” Tour



Miley Cyrus/Jonas Brothers

- \$1 from every ticket for 2009-10 tour
- 2008-09 tour and Concert for Hope generated over 400 media mentions and raised more than \$2 million



The image features a background of a modern building at dusk, with its lights glowing against a dark sky. The building has a glass facade and a prominent tower. The title "City of Hope IT Infrastructure Projects" is overlaid in white, bold, sans-serif font. Below the title, a large, curved, light-yellow banner contains a list of project categories in black, bold, sans-serif font.

City of Hope IT Infrastructure Projects

- Data Center Relocation
- IT-Security Initiatives !
- Massive Storage Growth
- Business Continuity / Disaster Recovery
- Network and Wireless Expansion
- IT Outsourcing Evaluation (Technology Only)